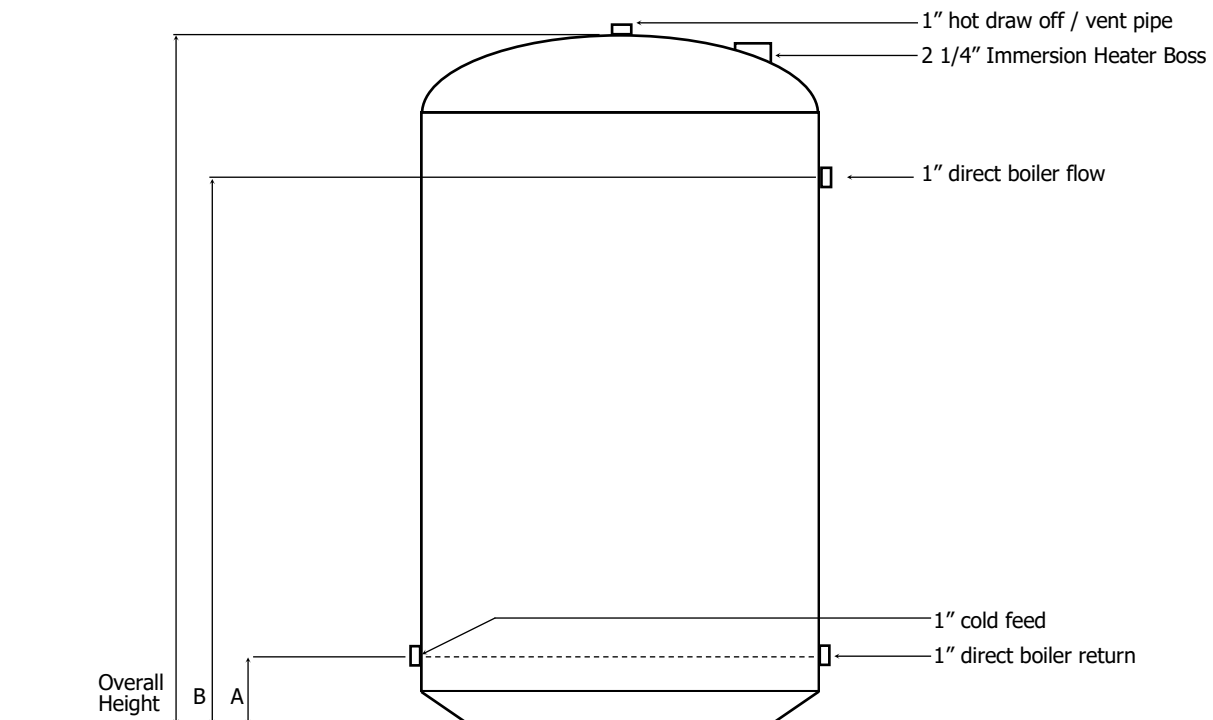


# Technical Data Sheet

## Copper Vented Direct



All dimensions are based on the cylinder shell only, insulation is not included

Available Grades	Max Working Head
Grade 3	10m
Grade 2	15m
Grade 1	25m

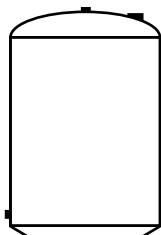
Capacity (L)	96	72	96	114	84	95	106	117	140	162	206
Height (mm)	1600	900	900	1050	675	750	825	900	1050	1200	1500
Diameter (mm)	300	350	400	400	450	450	450	450	450	450	450
A (mm)	100	100	100	100	100	100	100	100	100	100	100
B (mm)	1250	700	700	800	450	550	625	700	800	950	1200

### Common Tapping Codes

#### G1

Standard Configuration.

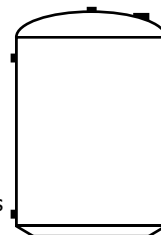
- 1 x Hot Draw Off /Vent
- 1 x Cold
- 1 x Direct Boiler Flow
- 1 x Direct Boiler Return
- 1 x Top entry immersion boss



#### C1

Standard Configuration.

- 1 x Hot Draw Off / Vent
- 1 x Cold
- 1 x Direct Boiler Flow
- 1 x Direct Boiler Return
- 1 x Top entry immersion boss
- 1 x Secondary Return



#### G4

Standard Configuration.

- 1 x Hot Draw Off / Vent
- 1 x Cold
- 1 x Direct Boiler Flow
- 1 x Direct Boiler Return
- 1 x Side entry immersion boss

